



TBS CO GROUP

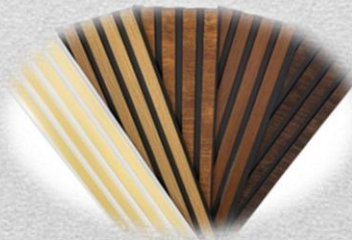
wall coverings, cornices and additional interior Decoration tools

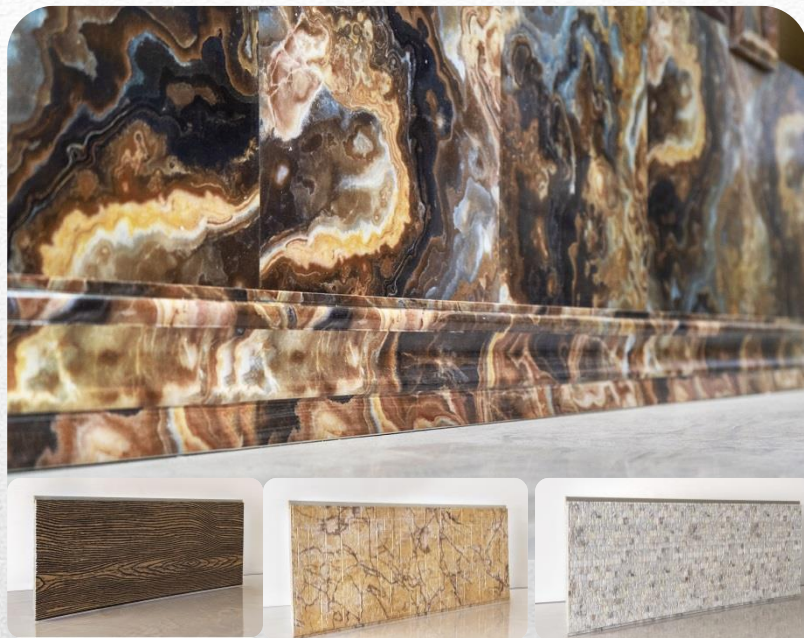
About us

This is TBS co Group is the most complete producer of wall coverings, cornices and additional interior decoration tools. Solid polystyrene wall covering and cornice can be installed on any type of material with suitable substructure and it is used as wall covering and false ceiling in many parts of the building.

Polystyrene wall coverings and polystyrene cornices are the best substitutes for natural wood, and with various designs that include wood designs and stone designs and are produced in very beautiful and different colors, they can be used in high-traffic places where there is a possibility of damage to the upper wall. Polystyrene wall coverings and polystyrene cornices can be used safely in residential, commercial, office and meeting halls.

TBS Group, as one of the producers of polystyrene wall coverings and polystyrene cornices, can provide consumers with this product at an economical and reasonable price





wall covering with Pars Stone design

TBS wall covering is a creativity in interior decoration and spatial arrangement with natural stone design, very convenient and easy to install and replaceable, and it no longer needs building materials with long schedules and construction teams. It can be used on all smooth surfaces and even installed on old tiles and ceramics, which with its waterproof and antibacterial properties can be installed in the bathroom, service and kitchen areas.

Product Specifications

Raw material	Polystyrene
Application	Wall covering/ substitute for wall paper/ substitute for paint and oil and plastic/ substitute for wood
The size of each branch	Length 2.80 meters / width 20 cm
Color	Various colors of stone designs
thickness	8 mm
size	20 cm /30 cm
number in the box	10 branches
Weight of each carton	36kg
Installation Method	Pneumatic nail/ pneumatic needle/ glue
Features	Long life / light / durable / flexible / waterproof / antibacterial



Advantages of TBS polystyrene cornice:

It also provides the possibility of creating luxurious, diverse and homogeneous designs with other products such as leather metal, mirror, glass and wall paper with unique beauty to implement your ideas in the design of your home and workplace decoration, and Saving installation time and cost compared to other products used for decoration.

100% waterproof-Heat resistant-Anti bacterial.- flexible Scratch resistant.- Eco-friendly.

- Resistant to environmental factors, moisture and fungi.
- Having the ability to recycle.
- Resistant to pests.
- Free of any formaldehyde gas or unstable organic compounds unlike MDF and other similar products
- Good durability, hardness and linear expansion.
- Lightweight and easy to carry.
- Resistant to wear and corrosion.
- Dimensional stability (minimum deformation under pressure)
- Desirable hardness and dryness and resistant to external influences.
- Long service life and low maintenance cost even in adverse weather conditions.

Raw material	Polystyrene (a type of petrochemical material)
Application	Replace stone/MDF cornice
The size of each branch	3 m
Color	All TBS color codes
thickness	8 miles
Size/Width	7 cm / 9 cm /11cm /15 cm
number in the box	20 branches
Installation Method	It is easily installed by pneumatic nail / pneumatic needle and glue
Features	Long life / light / durable / flexible / waterproof / antibacterial



Corner TBS with the exclusive Quality

Filling the edges of the internal walls, apart from protecting furniture and furniture from impact and collision, due to the special design and color of this product, it has been able to provide a special beauty to the interior space. Among the other cases of use in framing in the form of The number eight is sleeping or in regular repetition to design a shutter wall covering with a classic style can be mentioned.

- 100% water proof - Heat resistant - Anti bacterial - flexible Scratch resistant - Eco friendly.
- Resistant to environmental factors, moisture and fungi.
- Having the ability to recycle.
- Resistant to pests.
- Free of any formaldehyde gas or unstable organic compounds unlike MDF and other similar products
- Good durability, hardness and linear expansion.
- Lightweight and easy to carry.
- Resistant to wear and corrosion.
- Dimensional stability (minimum deformation under pressure)
- Desirable hardness and dryness and resistant to external influences.
- Long service life and low maintenance cost even in adverse weather conditions.

Raw material	Polystyrene
The size of each branch	3 m
Color	All TBS color codes
thickness	4 miles
Size/Width	3 cm / 4 cm /5 cm
number in the box	30 branches
Installation Method	glue; Pneumatic nails and needles are installed
Features	Long life / light / durable / flexible / waterproof / antibacterial

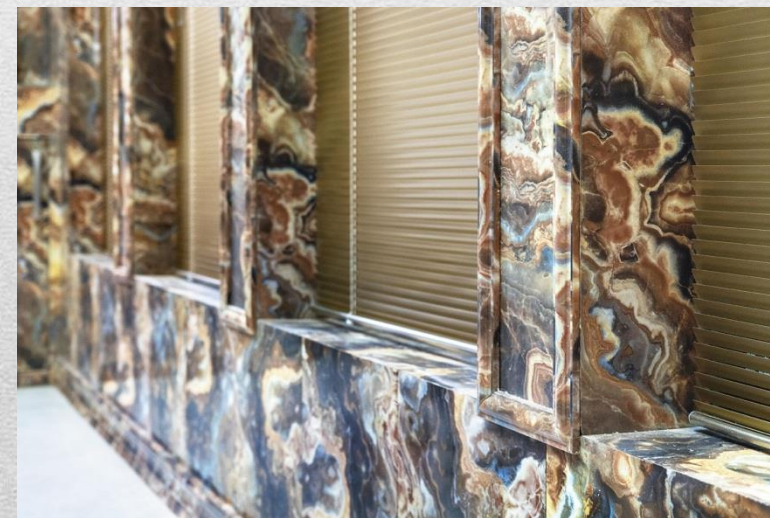
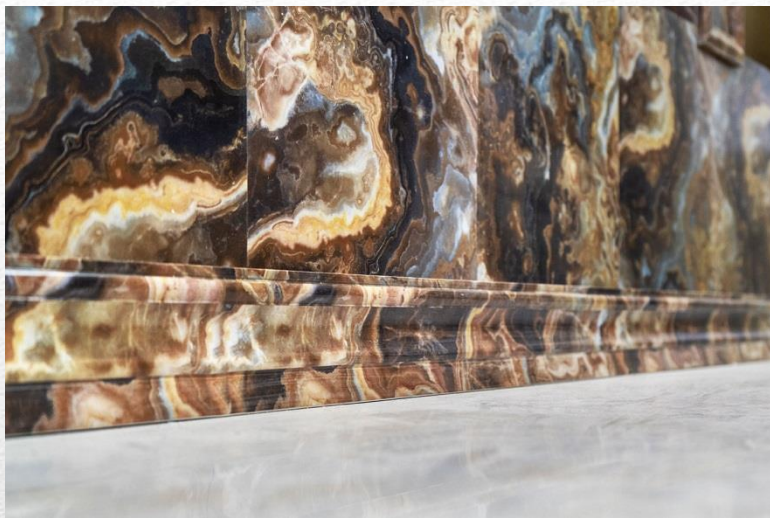


Polystyrene corner supplementary tools profile (Scotty)

Literally, the meaning of profile means that the section is fixed in a certain length. Profiles are almost everywhere. Industry, construction and road construction and... Most of the profiles are used to make iron doors and windows. Scotty profile is used for the inner corner of wall covering work. In places where stone or wooden cornice is already around, it can be used as an alternative instead of cornice.

Raw material	Polystyrene
The size of each branch	3 m
Application	Covering the corner of the wall
Color	All TBS Quality color codes
thickness	8 miles
Size/Width	4 cm
number in the box	30 branches
Installation Method	glue; Pneumatic nails and needles are installed
Features	Long life / light / durable / flexible / waterproof / antibacterial













Head Office : No. 130, 4th East Attar St, Shahinshahr, Isfahan, Iran
whats App number : +98 913 082 4370
Email: tbscogroup@gmail.com
Website: www.tbscogroup.com